



INSYNC  
SOFTWARE INC  
1.408.352.0600  
contact@insyncinfo.com  
www.insyncinfo.com

## iApp Applications – Indoor IT/Corporate Asset Tracking and Management Indoor and IT Asset Tracking



The number of IT assets in the average enterprise increases 15% per year. With the inability of many IT organizations to add resources, managing the growth is increasingly complex. To scale operations, many companies utilize asset management solutions only to find that updating asset information, such as location and condition, requires extensive manual effort. Assets information becomes stale and the risk of assets containing vital information being lost increases. Aside from the thousands of dollars of replacement costs, an average computing asset contains \$900,000 of information related to the company and its employees. If disconnected from the network, the asset is no longer visible and has become a liability. InSync provides the next generation of IT Asset Management solutions that utilize proven RFID technologies, helping CIOs to more effectively govern assets and reduce operational overhead.

### Application Benefits:

- Improved asset visibility and automation
- Physical asset governance
- Optimized location and utilization
- Reduced time to locate assets
- Automated asset information updates
- Compliance and audit reporting

### InSync's Solution Addresses:

- RFID tagging of assets with passive (zone based) or active (RTLS) tags
- Incorporation of CAD drawings, floor plans and imagery for visual reference
- Setting up geographic locations and zones of control
- Change order management with Auto-ID verification
- Unauthorized activity alerts
- RTLS and grid based location of assets
- Inventory by location and available space reporting
- Integration to enterprise asset management systems

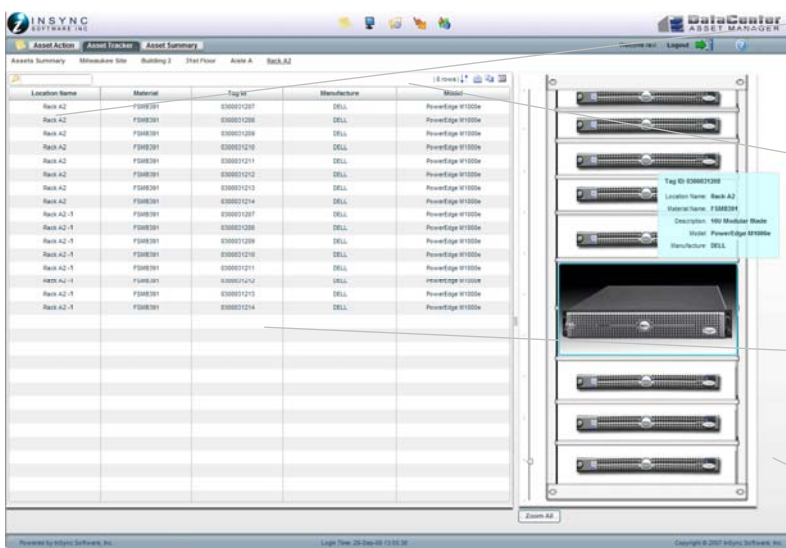
InSync's IT Asset Management solution utilizes multiple tagging technologies depending on the level of control and granularity of location desired. Assets from laptops to blade servers can be tagged with RFID technology. Using hand-held or portal RFID devices, assets can be managed through multiple processes and locations. The solution allows





operators to instantly locate assets such as a laptop in a crowded office or lab, or an individual server in a room full of occupied server racks. This level of visual granularity coupled with the incorporation of associated asset information provides for a number of automated processes throughout the asset's lifecycle. From the first association of the asset to its tag (check-in), change management processes, physical security alerts, upgrades, repair and final decommissioning processes can all be automated. Each asset and asset type can be associated to business rules governing its expected behavior. Process owners and technicians can be informed automatically if an asset is behaving outside its expected parameters. InSync's IT Asset Management solution provides award-winning dashboard visibility and alerts that show the summary and detailed views of asset information and location. Process owners are able to log into the system via a browser-based portal, manage asset processes, search for a specific asset, and view its history. Technicians responsible for maintenance can set up reminders based on equipment schedules, run searches for any out of tolerance condition and identify past due activities.

InSync's IT Asset Manager manages multiple sites and fixed locations creating a complete inventory view across the business. The once arduous task of physical inventory management of tens of thousands of assets can be reduced from days to a few hours delivering true ROI.



Displays real-time IT asset inventories, conditions and maintenance schedules for each location

Search box allows for specific location or entire network searches by product, maintenance schedule, drawings and

The Movement Trace feature displays real-time movements of equipment, personnel and supply