



INSYNC  
SOFTWARE INC  
1.408.352.0600  
contact@insyncinfo.com  
www.insyncinfo.com

iApp Applications – WIP/Supply Chain Inventory Management

## WIP/Supply Chain Inventory Management



Product-centric companies must manage operations by taking into account demand signals as well as observations from visibility. Modern businesses utilize channel partners to produce high volumes of high-value assets. These businesses have a daunting task of managing the partners on whom they rely for manufacturing, shipping, distribution, and logistics. Disparate systems and geographies between a customer and its partners create an inherent lack of visibility. The inability to view real-time inventory levels, asset movements and events throughout partner channels leads to higher safety stocks, inefficiencies in product updates, recalls and returns and most significantly, longer, more variable customer lead times. InSync hears the call of supply chain managers and provides an award-winning channel visibility solution.

### InSync's Solution Addresses

- RFID tagging of assets and product containers
- Physical inventory visibility at its location
- Shipping and receiving automation
- Sales channel output visibility
- Partner performance metrics
- Item-level search
- Returns management

InSync offers a WIP/Supply Chain Inventory Management application for tracking product as it is produced by Original Device Manufacturers (ODMs), transported, warehoused and eventually distributed. The application utilizes RFID technology including active, semi-active, or passive tags; and dock-door or conveyer mounted antennas. Tags are attached to individual product boxes or pallets as they are packaged

### Application Benefits:

- Lower inventory and safety stock levels
- Revenue recognition based on predefined rules
- Reduction of average customer lead time
- Indisputable performance metrics for ODM, 3PL and channel partners
- Efficient returns management enabled by an automated pedigree database
- Physical inventory level visibility across the supply chain

### Software Features

- Mobile application support (handhelds, PDAs, cell phones)
- Seamless connectivity to RFID, Barcode, GPS, handhelds and sensors
- Automated alerts for management of maintenance histories, replacement schedules and more
- Award winning look and feel, including easily customizable real-time dashboards
- Web-based commissioning of applications to locations and mobile devices
- Comprehensive functions library and pre-defined workflows allow users to deploy easier and faster than ever

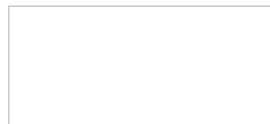
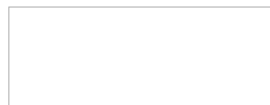
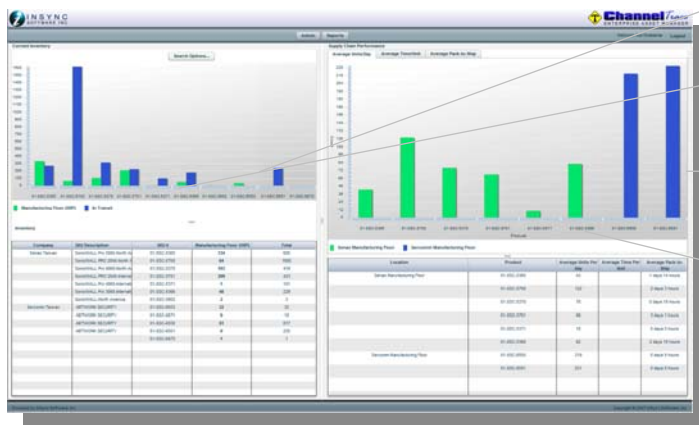


after manufacturing. Individual serial number IDs for each product are written to each box, and multiple boxes are palletized.

Upon leaving the manufacturing facility, the IDs of the product are recorded by dock-door RFID antennas. The manifest for the shipment leaving is automatically created based on the scanned contents. InSync's application references back-end systems for the associated original PO, and compares the scanned manifest values against it to ensure the shipment is correct. Issues are noted for exception resolution in real-time assuring a high quality delivery process.

InSync's WIP/Supply Chain Inventory Management application allows process owners to view partner facilities' inventory levels through a web-based dashboard, accessible from anywhere with Internet connectivity. The software allows for real-time item location searches across the supply chain, and provides customers with indisputable performance metrics for each partner and logistical service provider, including average units produced each day, cycle time performance, average service levels, on-time performance and more.

Using the application, customers have achieved fine-grain visibility of inventory levels and events, and can identify and address logistical bottlenecks or processes that are particularly inefficient. This detailed real-time knowledge of the location and movements of product results in shortened customer lead times and reduced safety stock levels.



Reports partner's performance metrics to determine efficiencies and process compliance

Displays detail for the graph above and pared-comparisons of multiple partners