



INSYNC
SOFTWARE INC
1.408.352.0600
contact@insyncinfo.com
www.insyncinfo.com

iApp Applications – Food Safety and Harvest/Cold Chain Management

Food Safety



The risk of contamination and tampering threatens the viability of brands that consumers trust the most. With the lack of automation and technology to manage the identification of foods and provide traceability, many companies are faced with the daunting task of using spreadsheets and paper documents to verify food products. Many of these manual processes are prone to error and frequently not auditable. With recent outbreaks of E. Coli related to fresh produce, this has become a highly visible issue. InSync addresses the concern of consumers and producers alike with an award-winning food safety solution that provide field-to-fork visibility, and detailed traceability of product and process.

InSync's Solution Addresses:

- RFID or Auto-ID tagging of bins and containers
- GPS-enabled mobile data capture
- Product origin trace capability
- Process metrics and reporting
- Product condition tracking
- Documentation and records management

InSync's Food Safety solution offers a first-of-its kind solution to manage food products from harvest to retail. The solution begins with preprinted RFID/Auto-ID tags that are sent to the field with empty cardboard/plastic harvesting bins and secured on-site. For plastic bins, the tags are potted in epoxy resin within a secure location to prevent damage. The tags are encoded using a GPS-enabled handheld reader that initiates the harvest process. Information associated to the tags includes location (GPS coordinates), crew, commodity, history of activity and time stamp. The InSync Food Safety solution can also integrate with temperature sensors to further ensure product integrity. Additional information can be gathered based on specific food characteristics and associated environmental requirements.

Using InSync's Food Safety solution, process owners along the chain of custody can log in to the system through a secure Internet portal to view real-time product

Application Benefits:

- Fine grain traceability of product back to harvest point
- Mitigation of risk through faster identification and response times
- Identification and elimination of process bottlenecks
- Reduction of scrap levels through better prioritization
- Improved velocity to market, resulting in increased freshness

Software Features

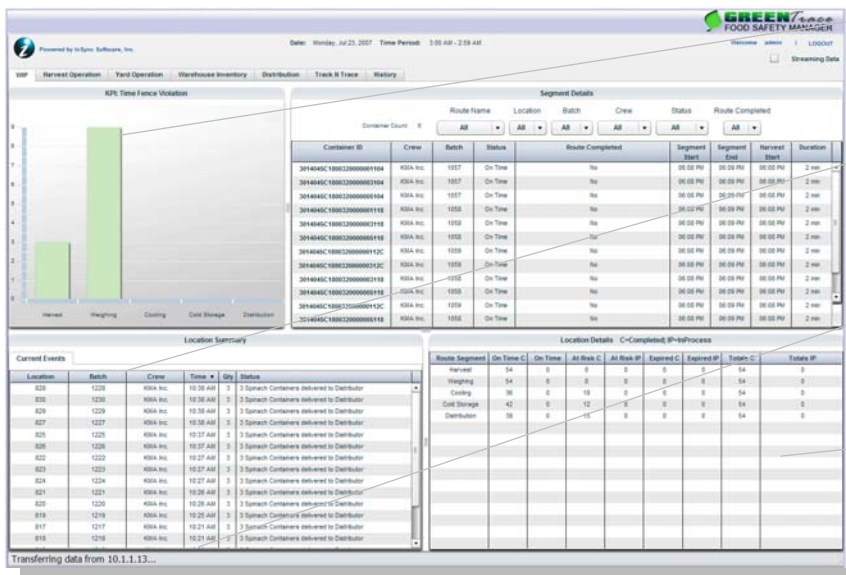
- Mobile application support (handhelds, PDAs, cell phones)
- Seamless connectivity to RFID, Barcode, GPS, handhelds and sensors
- Automated alerts for management of maintenance histories, replacement schedules and more
- Award winning look and feel, including easily customizable real-time dashboards
- Web-based commissioning of applications to locations and mobile devices
- Comprehensive functions library and pre-defined workflows allow users to deploy easier and faster than ever



movements and events. Process owners upstream can monitor the system for incoming lots allowing for advanced preparation and prioritization further minimizing waste and contamination risk. Additionally, InSync software incorporates time fencing logic for each process. For example, if a truckload of product is sitting idle for more than the defined amount of time for a particular process or stage of production, alerts are triggered, and operators are immediately notified.

Once the process is complete, the tag and environmental information associated with the product and its origin (i.e. grower, possessing facility) is viewable in the Food Safety solution dashboard. Should contamination be detected at any time, affected product and product at risk of cross-contamination can be identified and traced back to the GPS coordinates of its origin. Detailed information of a specific lot or item can be accessed for reference on demand. For partners in the food ecosystem that are connected to the solution, complete traceability from field-to-fork is now achievable.

Sensitive materials such as chemicals can be outfitted with temperature and other environmental sensors. InSync's software can integrate this data into the dashboard views to provide condition status for supplies and equipment. If assets have an expiration date, operators can minimize scrap and waste by using InSync's software to prioritize asset usage based on expiration status.



Segment details allow for bin-level searches, histories and batch identification

As product moves between each stage of production, movement is reflected in the dashboard

Detail for each location is available, allowing for process metrics and optimization

The summary box gives a snapshot of total volumes at each process step, including those completed, at risk and expired